

— sensory fibres
— motor fibres

Optic (II)
sensory: eye



Trochlear (IV)
motor: superior oblique muscle



Abducent (VI)
motor: external rectus muscle



Trigeminal (V)
sensory: face, sinuses, teeth, etc.

motor: muscles of mastication



Oculomotor (III)
motor: all eye muscles except those supplied by IV and VI



Facial (VII)
motor: muscles of the face

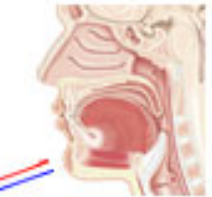
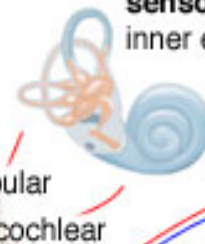
Hypoglossal (XII)
motor: muscles of the tongue



Intermediate motor: submaxillary and sublingual gland
sensory: anterior part of tongue and soft palate



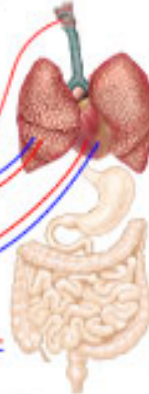
Vestibulocochlear (VIII)
sensory: inner ear



Glossopharyngeal (IX)
motor: pharyngeal musculature
sensory: posterior part of tongue, tonsil, pharynx

Vagus (X)
motor: heart, lungs, bronchi, gastrointestinal tract

sensory: heart, lungs, bronchi, trachea, larynx, pharynx, gastrointestinal tract, external ear



Accessory (XI)
motor: sternocleidomastoid and trapezius muscles

